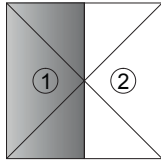


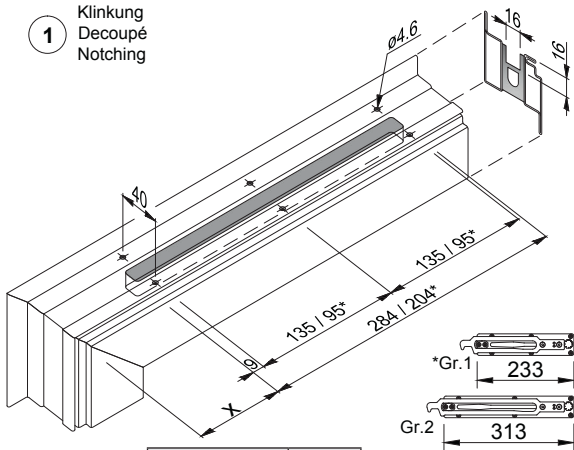
Einbau- und Wartungsanleitung für verdeckt liegenden Mitnehmerhaken.

Montage et instructions de maintenance pour taquet d'entraînement caché.

Installation and maintenance instructions for concealed carry bar.



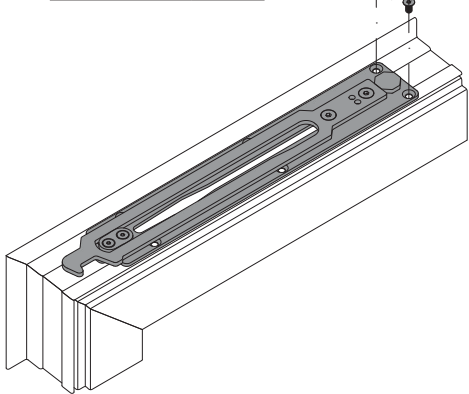
1 Klinkung
Decoupé
Notching



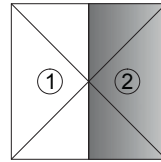
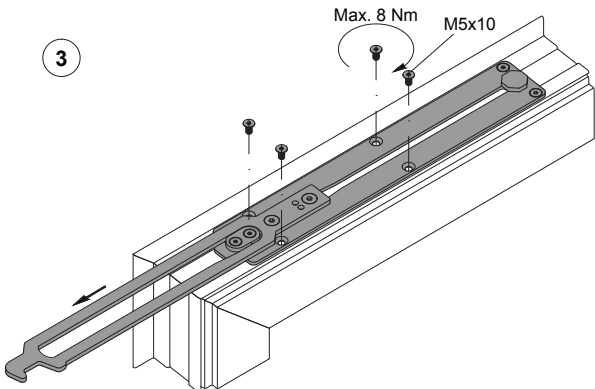
Türfalz Feuillure de porte Door rebate	Dim. X
10 mm	84 mm
12 mm	82 mm

Max. 8 Nm
M5x10

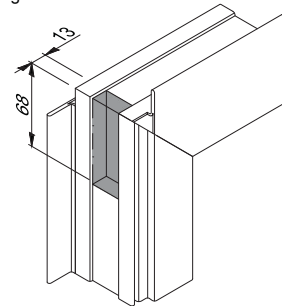
2



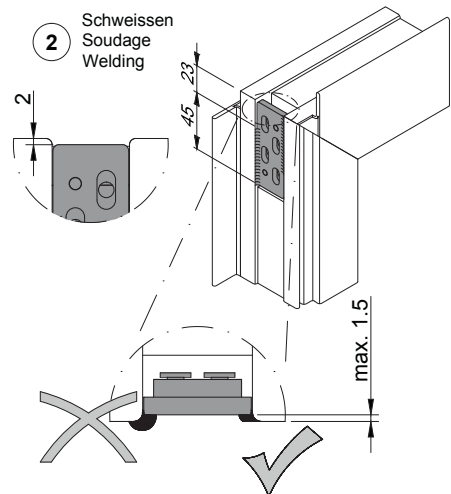
3



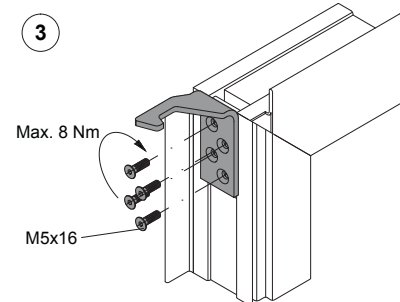
1 Klinkung
Decoupé
Notching

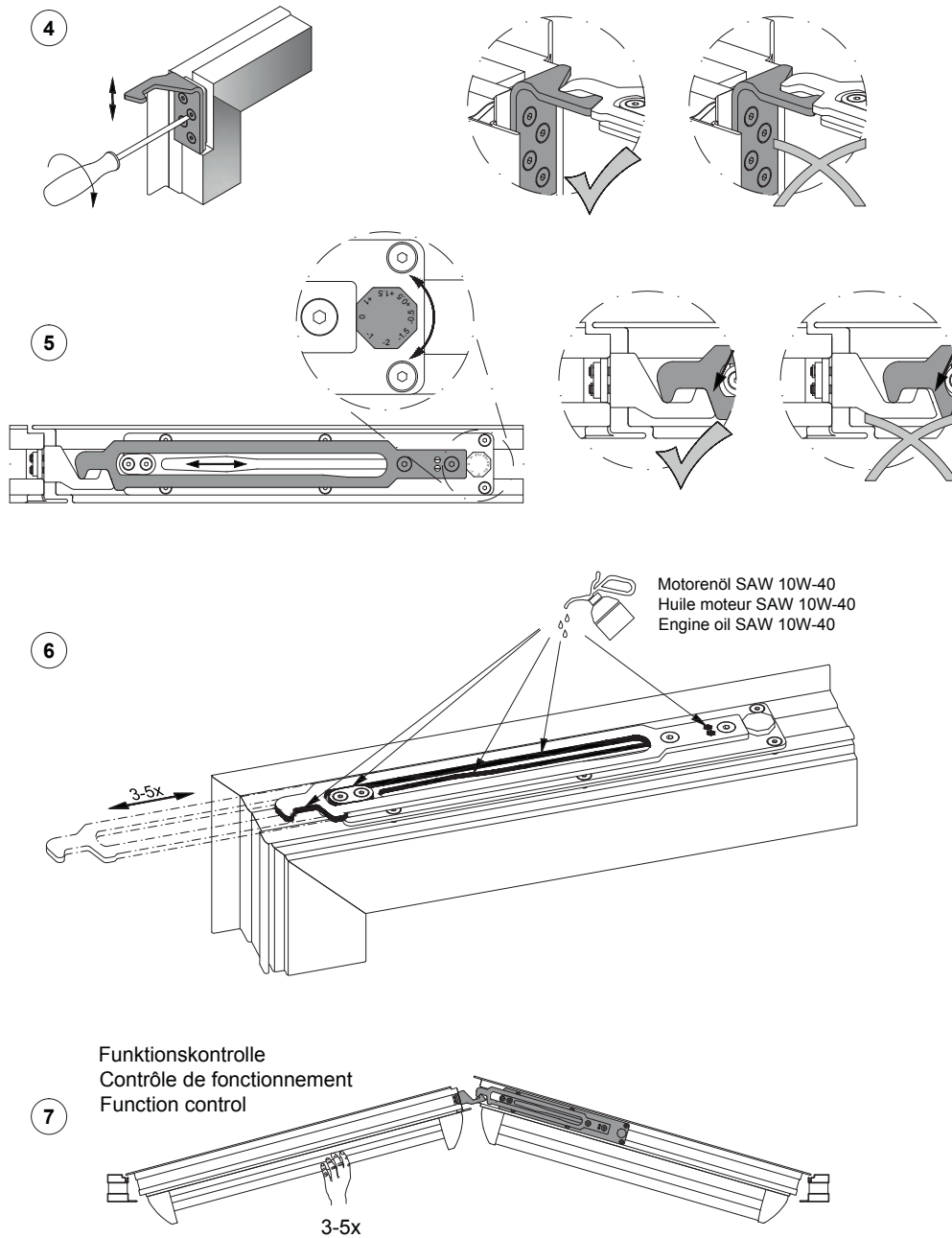


2 Schweißen
Soudage
Welding



3





Wartung

Einmal jährlich oder nach max. 50'000 Öffnungen müssen die nachstehenden Punkte überprüft werden:

- Überprüfen der Befestigungen (max. 8 Nm)
- Kontrolle der Anti-Panikfunktion
- Gemäss Anleitung (Punkt 6) schmieren

Maintenance

Les points suivantes doivent être vérifiées une fois par an ou après 50'000 ouvertures:

- Vérifier les fixations (max. 8 Nm)
- Contrôler la fonction anti-panique
- Selon les instructions (point 6) graisser

Maintenance

The following points should be carried out at least once a year or after 50'000 openings:

- Check the fixation (max. 8 Nm)
- Check the panic function
- According to instruction (Point 6) to grease