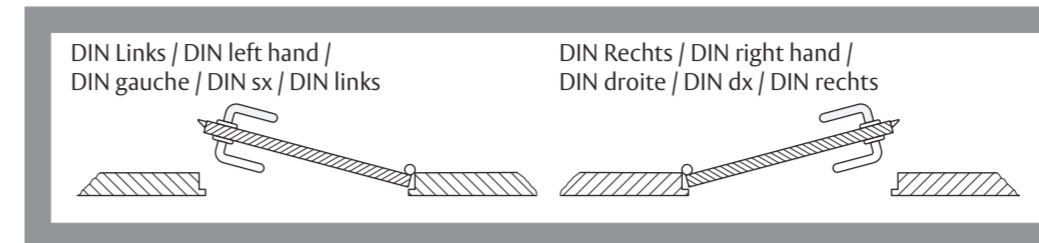
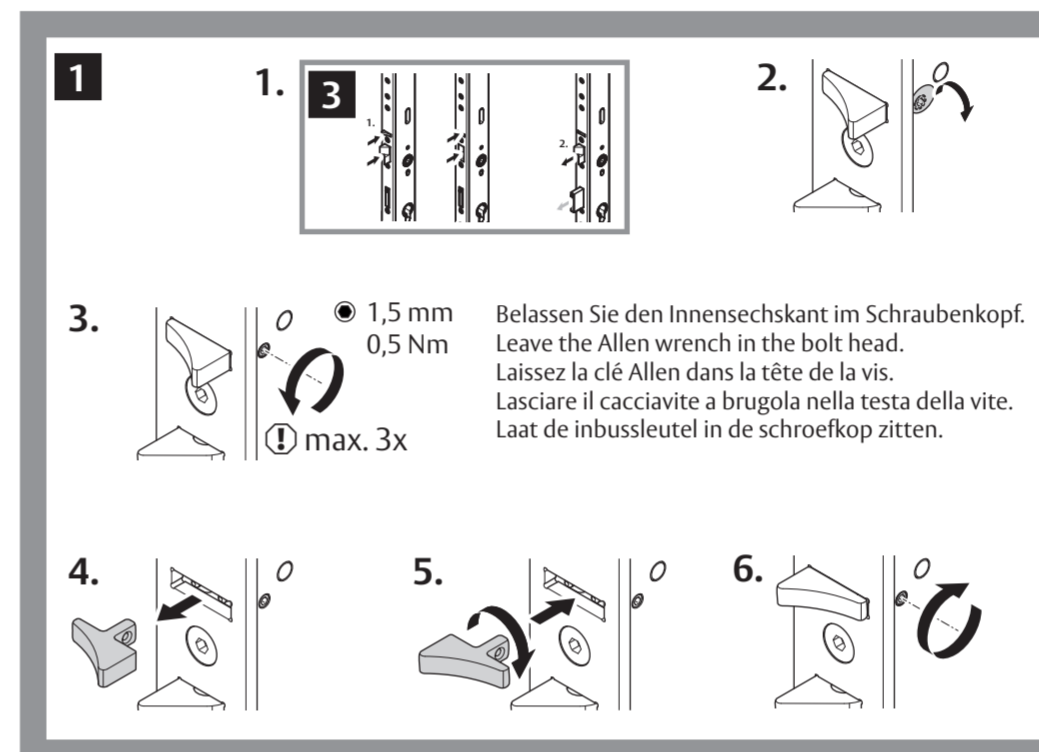


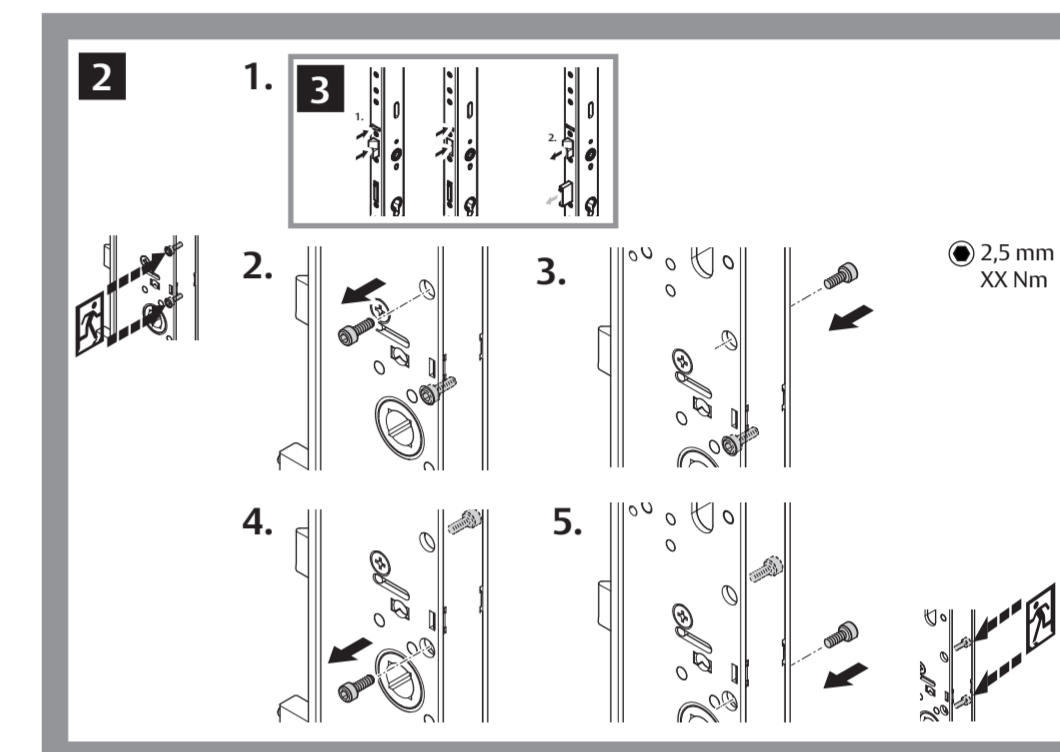
Anschlagrichtung / Closing direction / Position du pêne pilote /
Direzione di chiusura / Aanslagrichting



Steuerfalle drehen /
Rotating the control latch /
Inverser la position du pêne pilote /
Inversione del saliscendi /
De stuurschoot draaien



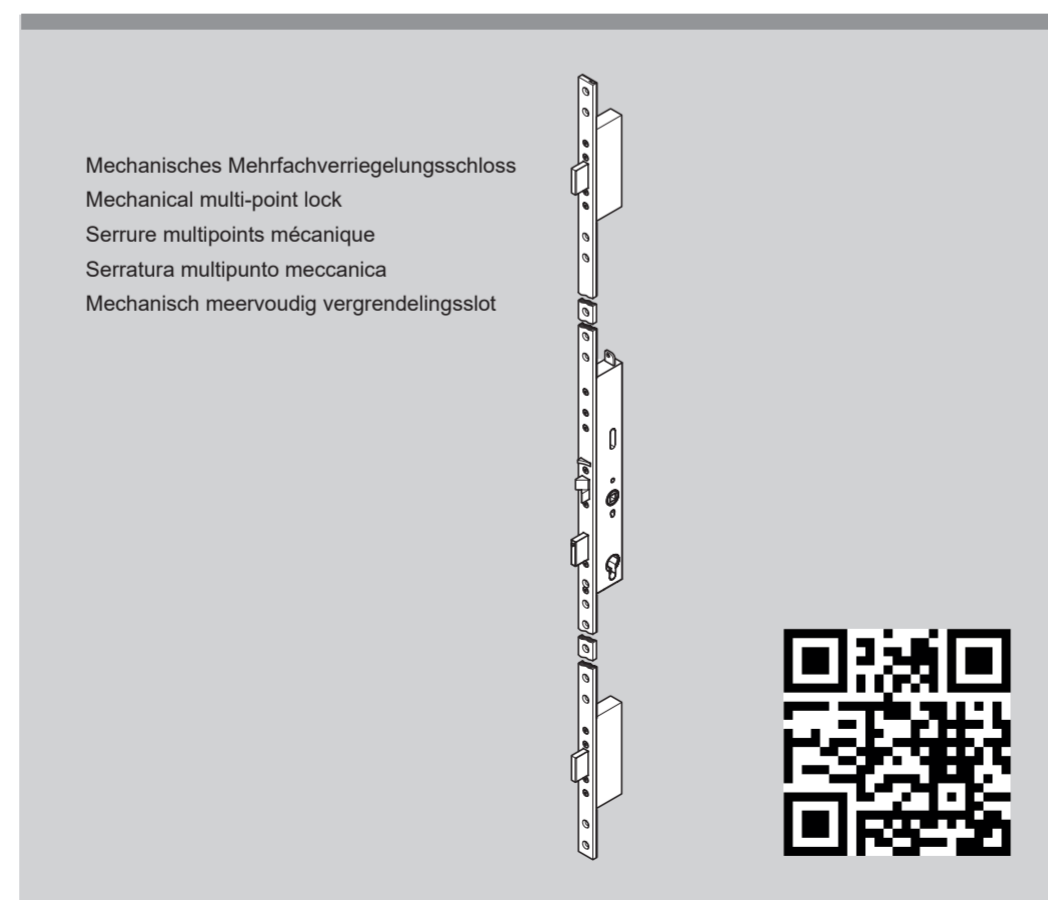
Panikseite einstellen (B-Funktion) /
Changing the panic side (B-function) /
Modification du côté anti-panique (Fonction B) /
Sostituzione del lato antipanico (B-funzie) /
De paniekzijde wisselen (Functie B) /



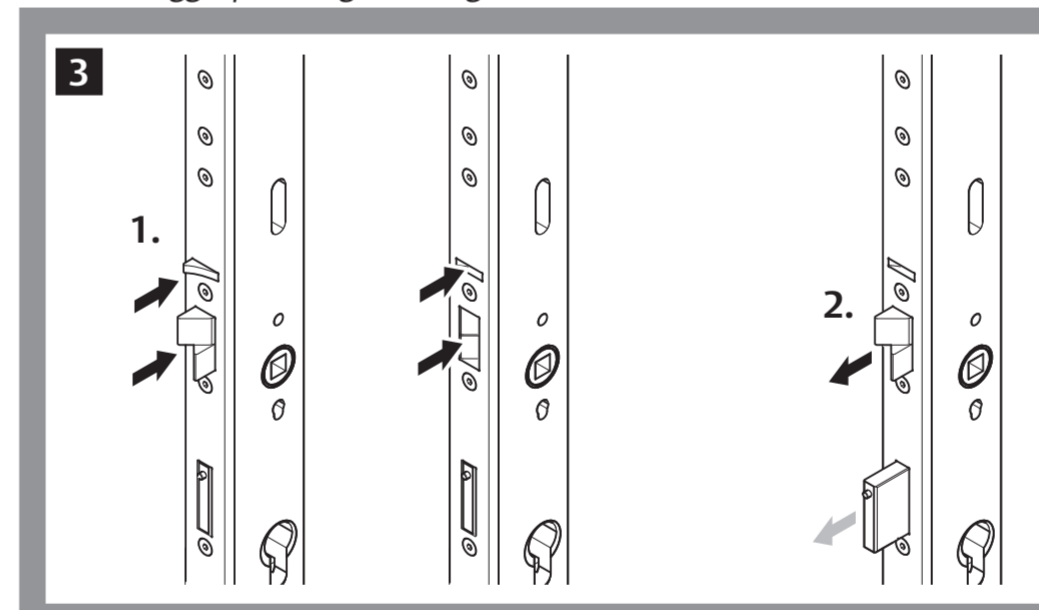
forster

Forster Sicherheitsschloss FO.319N(0/E/B)0/7 – Kurzanleitung
Forster Security Lock FO.319N(0/E/B)0/7 – Quick manual
Forster Serrure de sécurité FO.319N(0/E/B)0/7 – Guide rapide
Forster Serratura di sicurezza FO.319N(0/E/B)0/7 – Manuale di rapida
Forster Veiligheidsslot FO.319N(0/E/B)0/7 – Korte handleiding

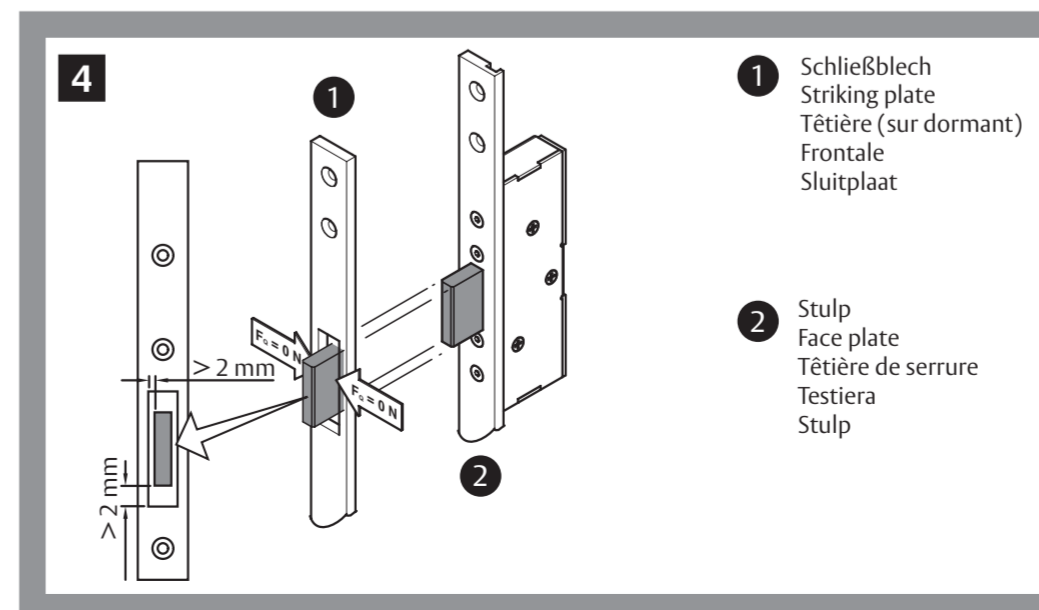
Technische Änderungen vorbehalten.



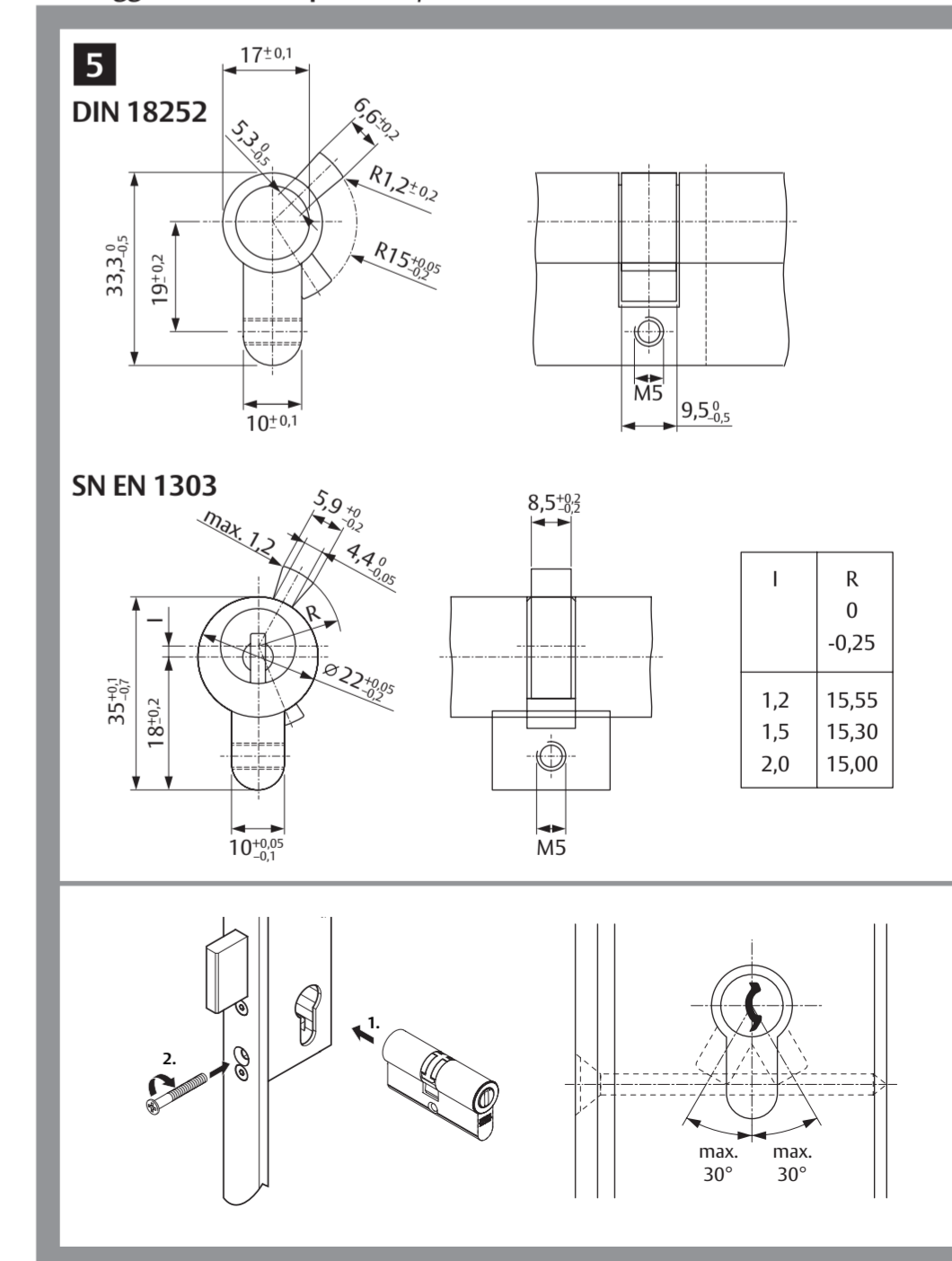
Selbstverriegelung / Self-Locking /
Verrouillage automatique /
Autobloccaggio / Zelfvergrendeling



Riegel frei von Querscherbelastungen / No transverse shear stress on the bolt /
Absence de contraintes transversales sur le pêne dormant /
Chiavistello montato privo di sollecitazioni trasversali /
Nachtschoot vrij van dwarsbelasting



Profilzylinder montieren / Installing the profile cylinders /
Montage du cylindre profilé /
Montaggio del cilindro profilato / Profielcilinder monteren



Forster Sicherheitsschloss FO.319N(0/E/B)0/7 – Montageanleitung
Forster Security Lock FO.319N(0/E/B)0/7 – Assembly instructions
Forster Serrure de sécurité FO.319N(0/E/B)0/7 – Notice de Montage
Forster Serratura di sicurezza FO.319N(0/E/B)0/7 – Istruzioni di montaggio
Forster Veiligheidsslot FO.319N(0/E/B)0/7 – Handleiding voor montage

F19.1348.97/05-23

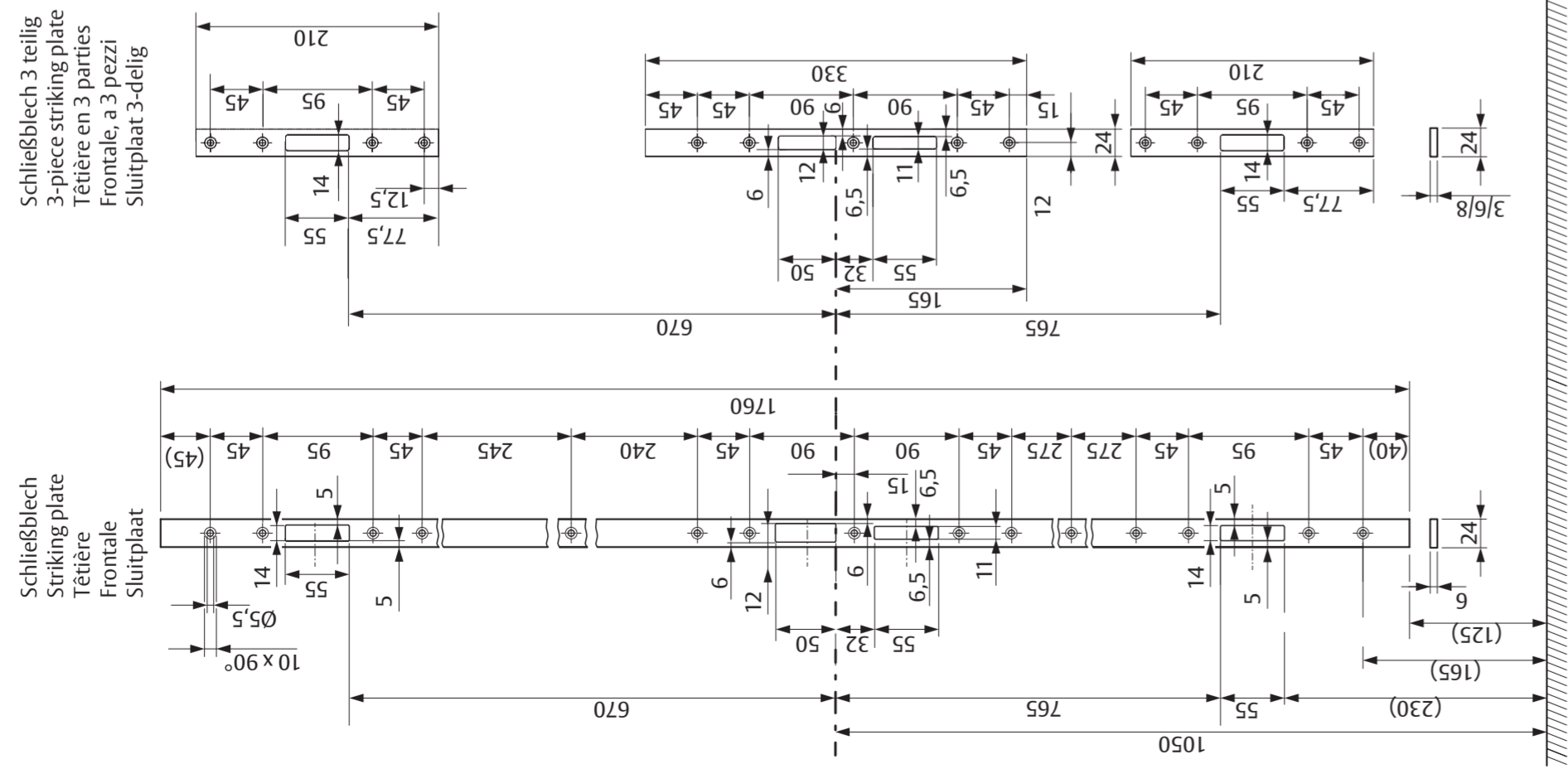
Forster Profilsysteme AG | CH-9320 Arbon
info@forster.ch www.forster-profile.ch

forster

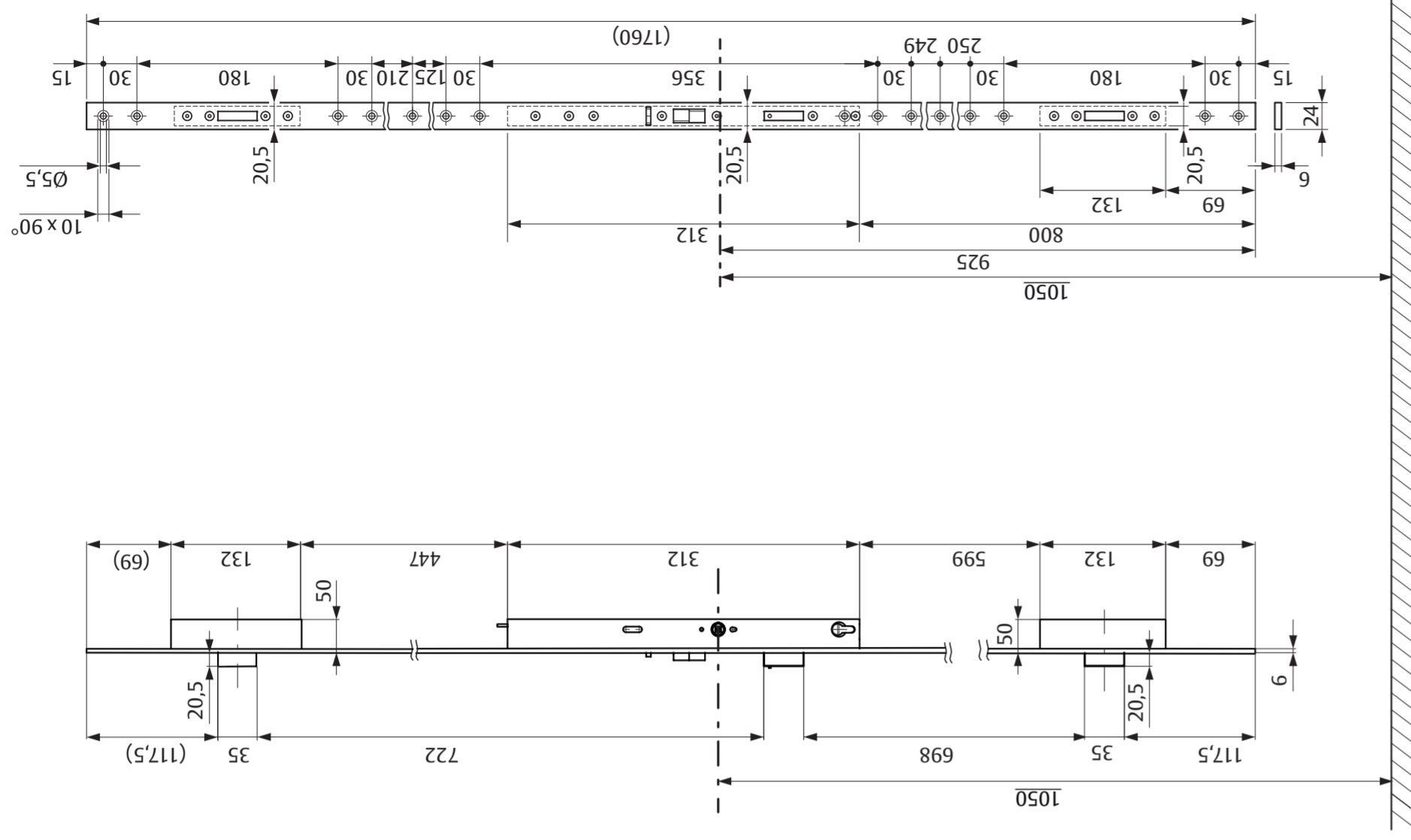
www.forster-profile.ch
F19.1348.97 D0085804

forster

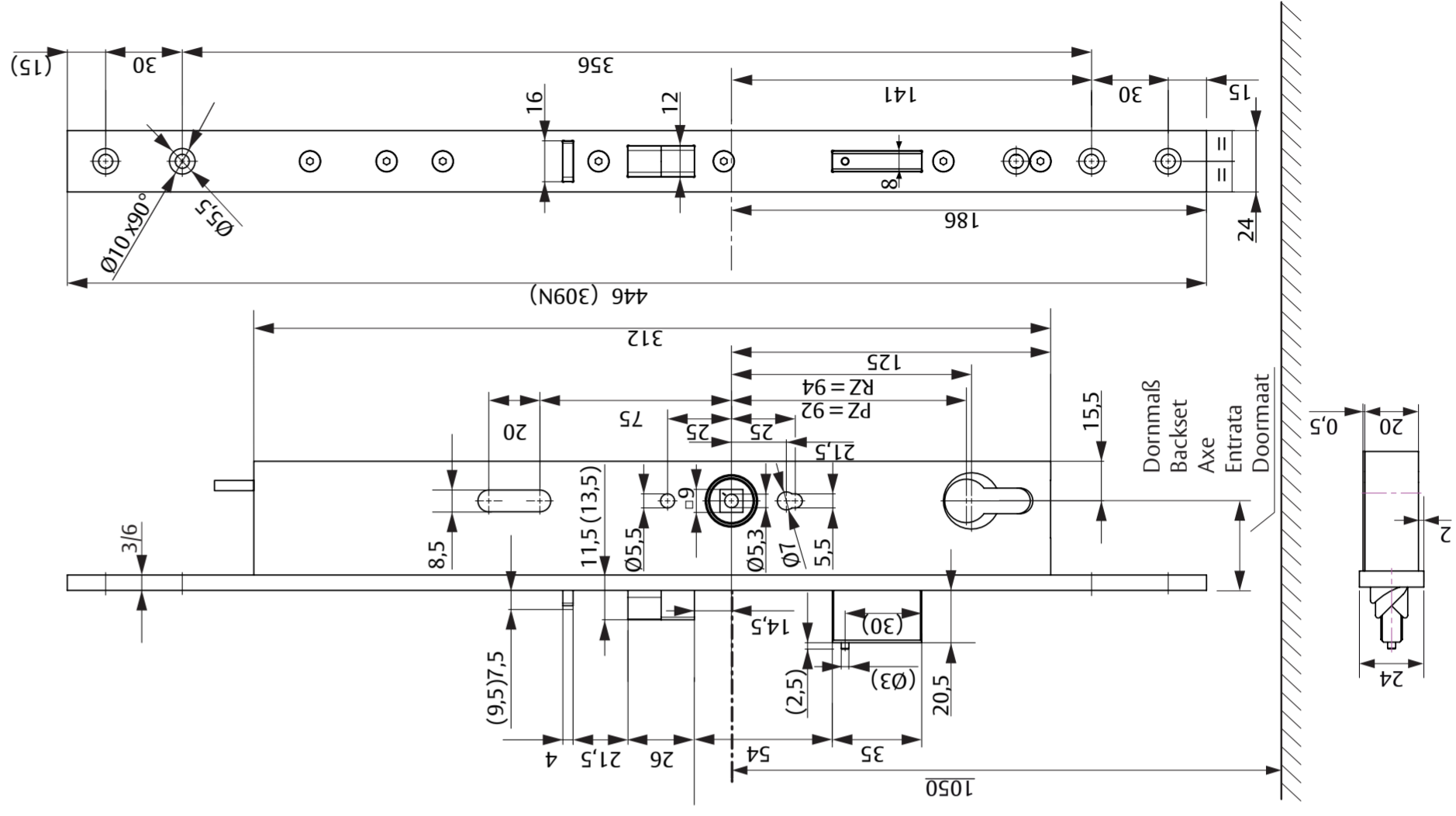
Abmessungen Schließblech 319N /
 Dimensions of striking plate 319N /
 Dimensions de têteère 319N /
 Dimensioni frontale 319N /
 Afmetingen sluitplaat 319N



Abmessungen des Mehrfachverriegelungsschlusses 319N /
 Dimensions of the multi-point lock 319N /
 Dimensions de la serrure multipoints 319N /
 Dimensioni della serratura multipunto 319N /
 Afmetingen van het meervoudige vergrendelingslot 319N



Abmessungen des Hauptschlösses 319N
 Dimensions of main bolt 319N
 Dimensions du pêne dormant - principal 319N
 Dimensioni serratura principale 319N
 Afmetingen main slot 319N



Werte in Klammern nur bei Variante „zweiflügelig“ mit vorstehender Falle (2 mm).
 Values in brackets only for version „double-leaf door“ with protruding latch (2 mm).
 Les valeurs entre parenthèses uniquement pour la version „porte à deux vantaux“ avec pêne en saillie (2 mm).
 I valori tra parentesi solo per la versione „porte a 2 ante“ con scrocco sporgenti (2 mm).
 Warden tussen haakjes uitsluitend bij uitvoering „tweevleugelige deuren“ met uitstekende dagschoot (2 mm).

()